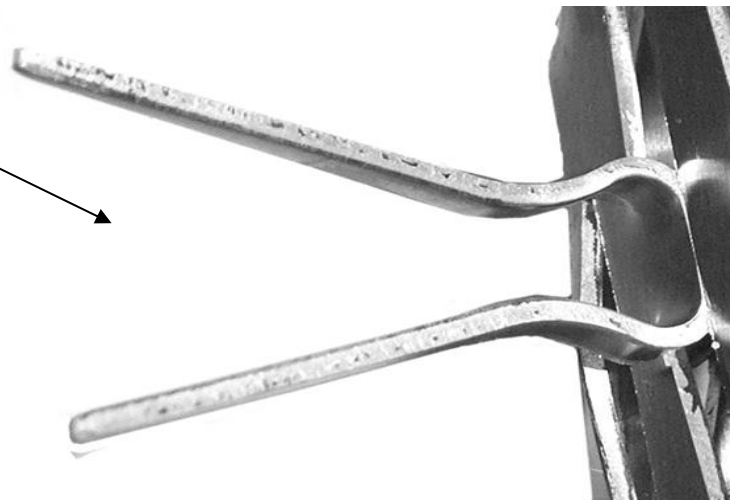
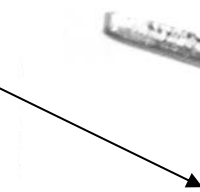
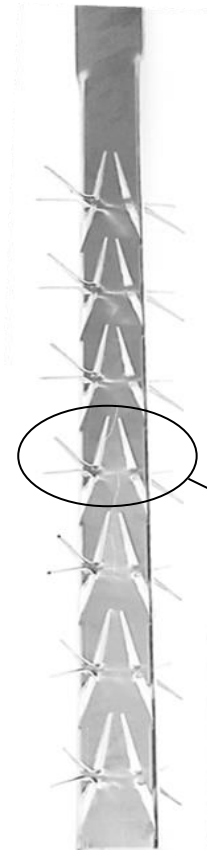


Client	
Référence	C - S50 075 A 20 ARA

750
HU
900
HT



CROSSE	
Modèle	Standard
Matière	Aluminium

TYPE DE LIAISON	
Rivetage	Aluminium

MONTAGE	
Modèle	Standard
Matière	Aluminium
Longueur contact	55 mm
Nb de Pinces (par Face)	14 x 2 = 28 Pinces
Nb de Faces	2

Poids unitaire :		kg
-------------------------	--	-----------

Indice		Date	Validation