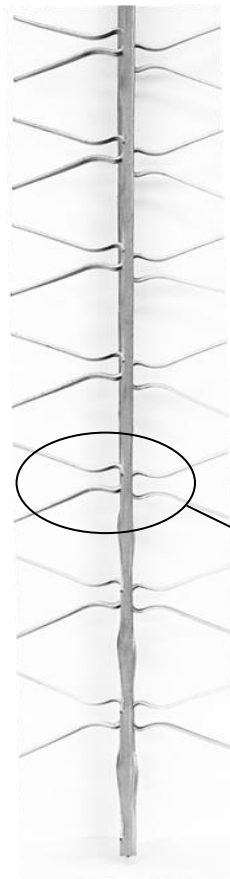


<b>Client</b>	
<b>Référence</b>	C - S70 100 T 15 ABA

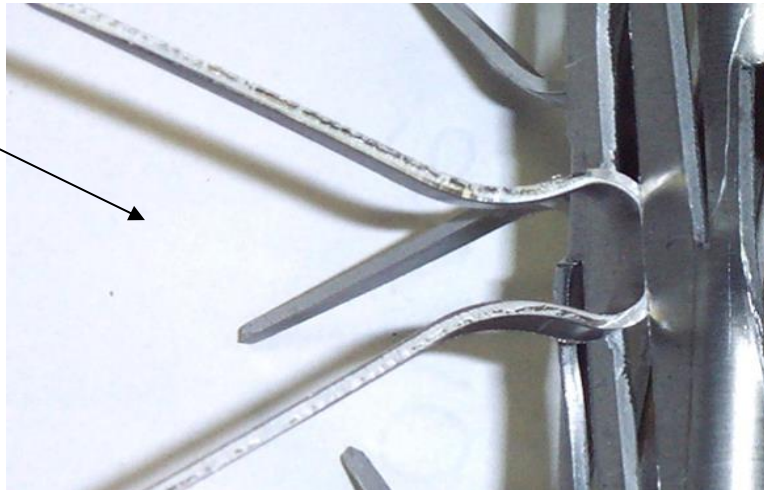
1000
HU
1150
HT



CROSSE	
<b>Modèle</b>	Standard
<b>Matière</b>	Aluminium

TYPE DE LIAISON	
<b>Boulonnage</b>	Aluminium

MONTAGE	
<b>Modèle</b>	Standard
<b>Matière</b>	Titane
<b>Longueur contact</b>	65 mm
<b>Nb de Pinces (par Face)</b>	12 x 2 = 24 Pinces
<b>Nb de Faces</b>	2



<b>Poids unitaire :</b>		<b>kg</b>
-------------------------	--	-----------

Indice	Date	Validation