

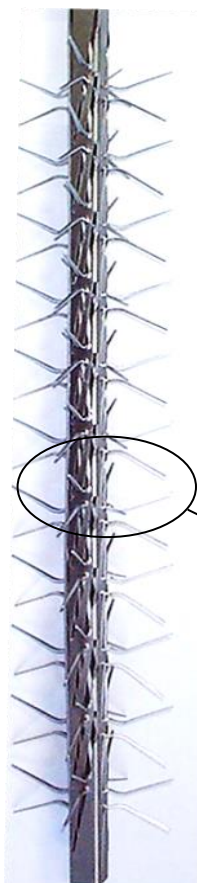
<b>Client</b>	
<b>Référence</b>	C - S75 100 A 20

1000
HU
1150
HT

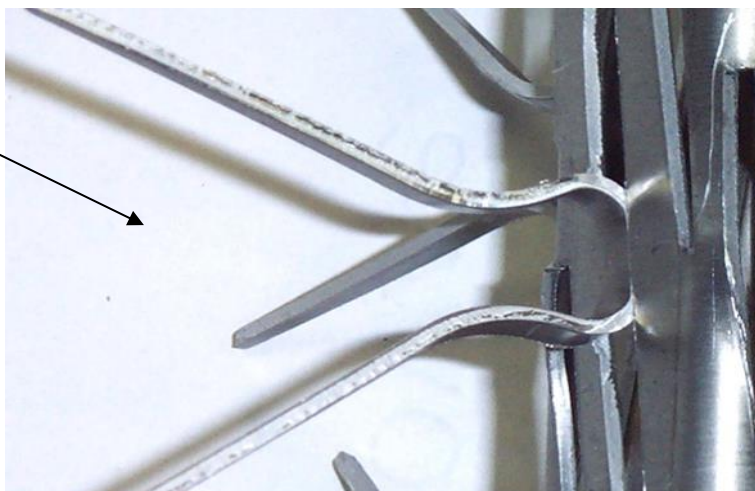


CROSSE	
<b>Modèle</b>	Standard
<b>Matière</b>	Aluminium

TYPE DE LIAISON	
<b>Rivetage</b>	Aluminium



MONTAGE	
<b>Modèle</b>	Standard
<b>Matière</b>	Aluminium
<b>Longueur contact</b>	65 mm
<b>Nb de Pinces (par Face)</b>	11 x 4 = 44 Pinces
<b>Nb de Faces</b>	4



<b>Poids unitaire :</b>		<b>kg</b>
-------------------------	--	-----------

Indice	Date	Validation